

# A RETAILER'S BEST FRIEND.



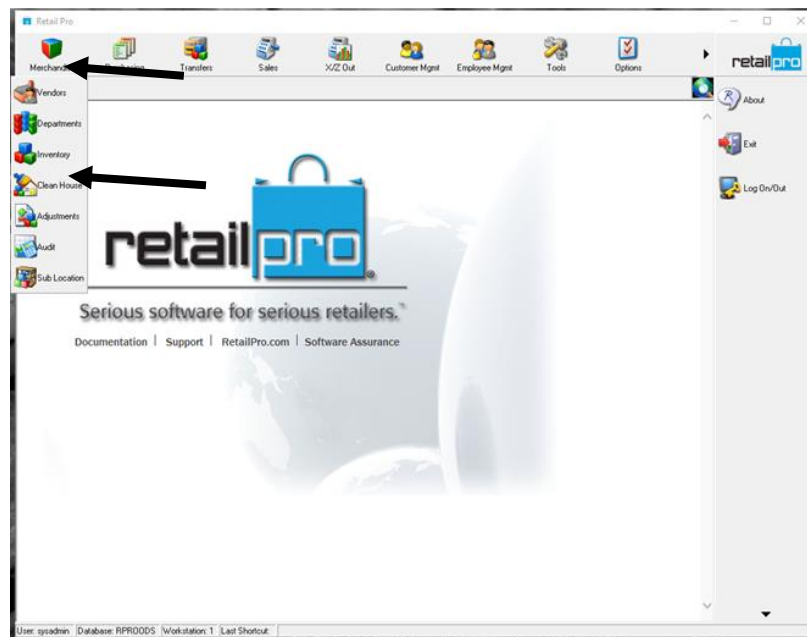
## Using Committed

*Version 9*

[https://youtu.be/b\\_mBxPwtXi0](https://youtu.be/b_mBxPwtXi0)

RetailPro9 has the ability to view outstanding Sales Orders or Purchase orders for an item. The Committed screen displays any documents that affect an item's committed information—any SOs or TOs that an item has been committed out on, any POs or TOs it is expected in on (incoming), and the item's on-hand quantities. The order documents listed on the Committed screen can be accessed directly from that screen.

1. Starting from the main screen in Retail Pro, click on Merchandise and Inventory.



- From the Inventory List Highlight the item lien you want to look at and click on options then committed button on the side menu.

Inventory > Sub: 001 Str: 000 Active Only

Subsidiary: 001

Global UPC	DCS	Vend Code	Desc1	Desc2	Size	Attr	Cost	Price	MktDn Price	MktDn Price WT
	A B C	BIGDOG	DOG BONE	MEDIUM DOG BOI MED		BONES	1.00	3.00		
0098785432198	A B C	BIGDOG	DOG BONE	BIG DOG BONE	BIG	BONES	5.00	10.00	15.00	15.00
0098761234512	A B C	BIGDOG	DOG BONE	SMALL DOG BONE	SMALL	BONES	1.00	2.00	4.00	4.00

Context Menu Options:

- Update Style
- Price Level
- Pricing Method
- Print Tag
- Committed
- Promo Pricing
- Select Location

Side Menu Options:

- Help
- Next
- Previous
- Filtered View
- Cancel Filter
- Style View
- Update Style
- History
- Price Manager
- Auto MinMax
- Physical Inventory
- Options
- SRO Analysis
- Print Tags

- When Committed is selected it will default to the active store. The top half of the window shows the Sales Orders and the bottom half shows the Purchase Orders. You can view the orders in the committed windows by selecting the document and selecting view from the bottom half of the window, this will take you to the document to view the items listed on the order.

X

**Location CMP:**

**COMMITTED**


Source	Qty	Plan Avail	O/H Avail	When
SO # 000100000000001	1	98	-2	
Total Committed:		1	98	-2


**INCOMING**


Document	Qty	Plan Avail	O/H Avail	When
PO # 1	100	99	99	11/14/2019
Total Incoming:		100	99	99


Next Available:


Lead Time (days):

  
View

  
Select Store

  
Location

  
Style

  
Close

